

FISHER

SPEC. 3110 REV."C"

JOB NAME:

QUANTITY:

ITEM NO.:

PRODUCT NAME:
SINGLE DECK DUAL CONTROL FAUCET

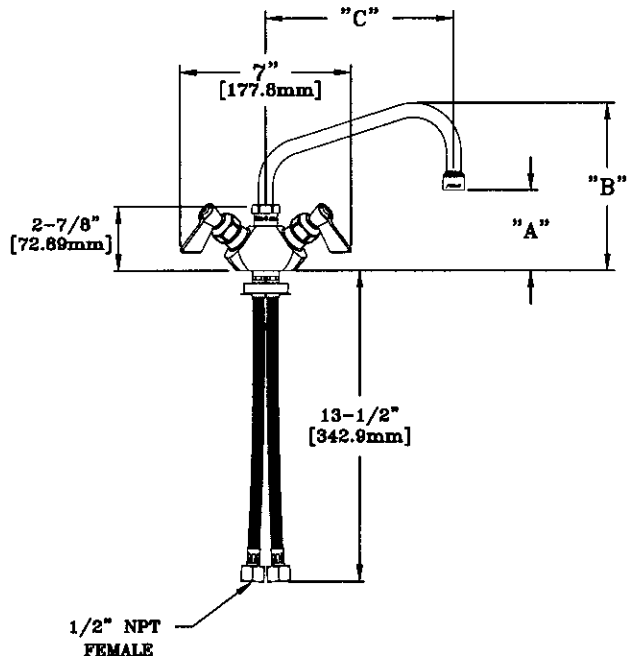
- _____ SPECIAL CONFIGURATION
 (CHECK BASE MODEL AND OPTIONS)
- MODEL:
- 3110 W/ 8" SWING SPOUT
 - 3111 W/ 8" SWING SPOUT
 - 3112 W/ 10" SWING SPOUT
 - 3113 W/ 12" SWING SPOUT
 - 3114 W/ 14" SWING SPOUT
 - 3118 W/ 16" SWING SPOUT

- OPTIONS OR MODIFICATIONS:
- SUPPLY LINES (24" OR 36") CIRCLE LENGTH
 - DJ SUB-ASSY (7-1/4" OR 13") CIRCLE LENGTH
 - VANDAL RESISTANT KIT
 - HANDLES (CROSS OR WRIST) CIRCLE STYLE
 - OTHER _____

- FEATURES:
- * SINGLE DECK, DUAL CONTROL
 - * SWIVELLING SEAT DISKS
 - * HOT SIDE STEM - RIGHT HAND, COLD - LEFT HAND
 - * STAINLESS STEEL SEATS
 - * STAINLESS STEEL SEAT SCREWS
 - * STAINLESS STEEL HANDLE SCREWS
 - * FLEXIBLE INLET HOSES

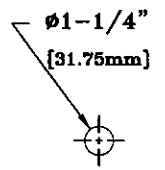
- SYSTEM LIMITS
- * TEMP: 40°F MIN. TO 140°F MAX.
 - * PRESSURE 200 PSI MAX. STATIC
 - * 2.20 GPM @ 60 PSI

- SHIPPING WEIGHT
- * 4.75 LBS



MODEL	DIM "A"	DIM "B"	DIM "C"
3110	3" [76.2mm]	6-5/8" [168.28mm]	6" [152.4mm]
3111	3-1/4" [82.55mm]	7-1/8" [180.98mm]	8" [203.2mm]
3112	3-7/8" [98.43mm]	7-5/8" [193.68mm]	10" [254.0mm]
3113	4-1/2" [114.3mm]	8-1/16" [204.79mm]	12" [304.8mm]
3114	5-3/16" [131.76mm]	9" [228.6mm]	14" [355.6mm]
3118	5-7/8" [149.23mm]	9-5/8" [244.48mm]	16" [406.4mm]

ROUGH-IN:



ANSI/A112.18.1M